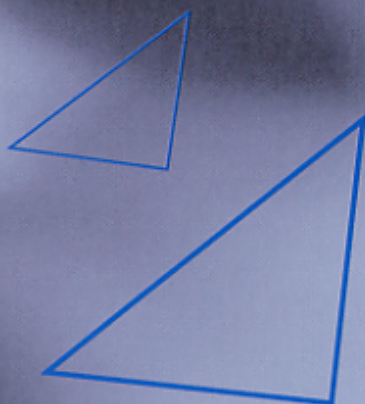



***Supply chain management
is NOT just a slogan !***




**Oriental
Logistics**

東方物流






*Who provides logistics solutions
with a heart-to-heart service?*







The Company

*O*riental Logistics, one of the leading logistics providers in Hong Kong, starting out with traditional transportation and warehousing services, gradually moved into high end, high value-added, total logistics services.

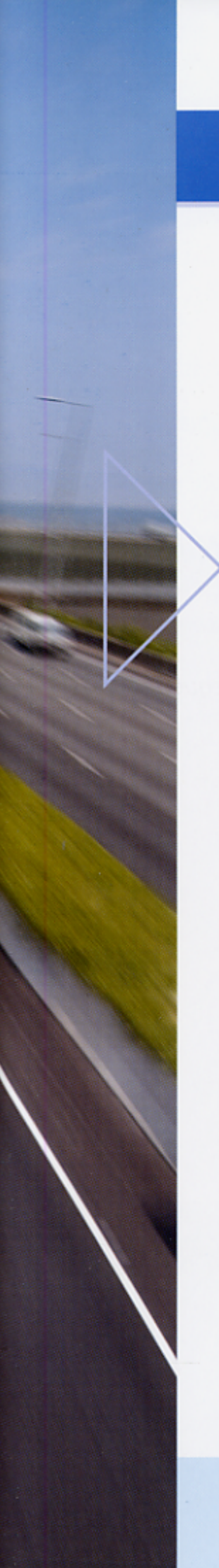
We provide cost effective and dependable solutions with excellent quality and reliable services.




We start our business here.



Vision



*To become the
best logistics provider
of the decade
with a pledge to provide
quality service.*

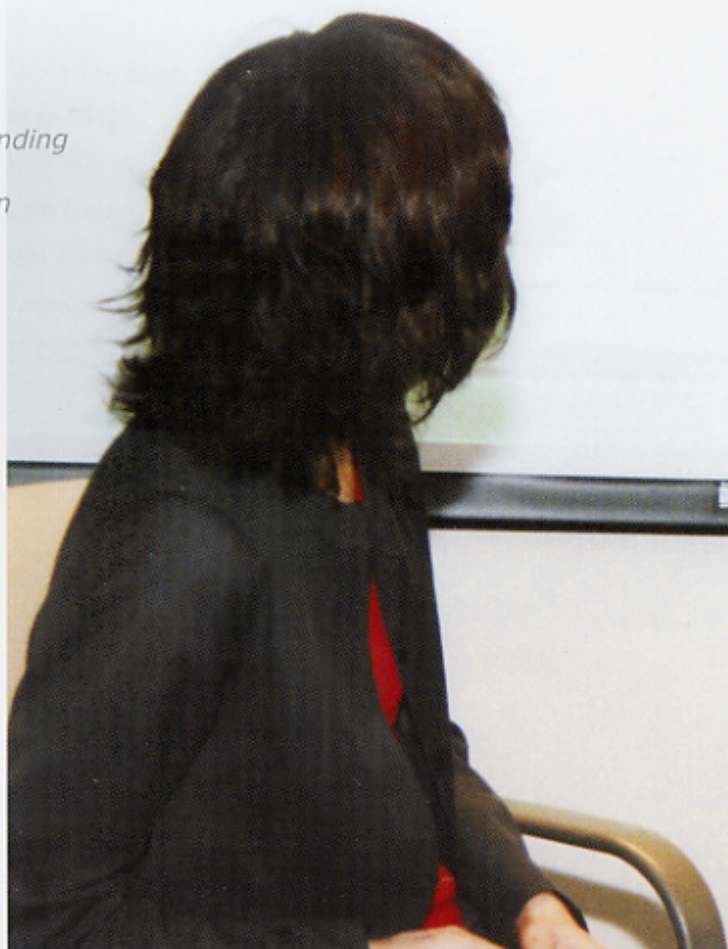


Mission



To provide **zero-defect** quality logistics
with advanced computer technology, in an
efficient and **customer-driven** manner,
resulting in total satisfaction for our customers.

In order to have a better understanding of customer needs for the provision of better services, we conduct customer surveys on a continual basis. The questionnaire is divided into ten parts, listing the stages of the logistics workflow. Customers are required to rate the importance of the stages as well as our current performance.







total logistics

Service Scope



Our services include total logistics solutions: logistics system design, inventory management, warehousing, transportation/distribution, freight forwarding (air/sea), China services, repacking, and value added services. We also provide individual services based on customer requirements. Moreover, our advanced online enquiry system on inventory control and transportation progress effectively assists our clients in monitoring the flow of their goods.



service / information system



Technology



We provide full information technology support with web-enabled logistics control systems.

Our tailor-made or customized software is designed to meet customers' specific requirements in several levels, namely:

- i. Modifying Data Entry Screens
- ii. Customizing reports or listings
- iii. Re-constructing new logic or object relationship for new work flow
- iv. Developing a new sub-system to perform new function

```
<meta http-equiv="Content-Type" content="text/html; charset=big5">
<title>Oriental Logistics Hong Kong</title>
<script type="text/javascript" src="http://hk.yimg.com/yimg/yass.js"></script>
<style type="text/css">
</style>

.bdsat {background-color: #4499e5;border-left:solid #4499e5 1px;}
.bdsab {background-color: #a5d6a7;border-left:solid #4499e5 1px;border-right:solid #4499e5 1px;border-bottom:solid #4499e5 1px;}
.bdsb {background-color: #9072cf;border-left:solid #9072cf 1px;}
.bdsz {background-color: #f1f1f1;border-left:solid #9072cf 1px;border-right:solid #9072cf 1px;}
.bdsi {background-color: #f1f1f1;border-left:solid #9072cf 1px;border-right:solid #9072cf 1px;border-bottom:solid #9072cf 1px;}
.bdsi a {color: #f1f1f1;}
.pdark {background-color: #999;}
.plight {background-color: #ccc;}
.pdkg {background-color: #efefef;}
// -->
</style>
<script language="javascript">
var win=0;
function openwin(mg,mn,mh,mj) {
  settings="width="+w+"px,height="+h+"px,top=0,left=0,scrollbars=yes,location=no,directories=no,status=no,menubar=no,toolbar=no,resizable=no";
  win=window.open(mg,mn,settings);
  win.focus();
}
function do_email() {
  function do_email() {
    var email="";
  }
}
```


All software products of Oriental Logistics use Oracle for both the front-end and back-end systems. They are designed to operate in Windows NT or Unix platforms with client server architecture. This means that the cost of ownership is low while maintaining a higher level of system flexibility.



ORACLE®



Quality service is always the key focus of Oriental Logistics. We conduct customer surveys on a regular basis as part of communication with our customers, while improving our services to meet their expectations in fast changing business environment. We also set up internal audits to measure our performance continuously, to fulfill our customers' needs in the new century.



Customer Focus



We have obtained international recognition from the Hong Kong Quality Assurance Agency, to certify that our Quality Management System complies with the requirement of ISO9001:2000 standard, which demonstrates our ability and commitment in delivering quality services.




ISO 9001 : 2000
Certificate No.: CC 2517




Quality People

People




***P**eople are always the key factor to providing quality service and we believe that staff are our most treasurable asset. Consequently, we constantly provide extensive training to our staff in order to enhance their level of technical expertise and customer relations, which are essential for providing superior and reliable logistics services to our customers.*



Quality Service



Community Service



Social responsibility is one of the core values of Oriental Logistics. We encourage our staff to actively participate in social services in order to reflect our membership and dedication to the local community. Consequently, Oriental Logistics Reciprocal Action Committee has been set up to organize activities to serve the community.



Services such as visiting and 'Walk for Millions' were held with great support from our staff. Through these and a host of other activities, Oriental Logistics has shown its dedication to contribute and support our community.

we served our community





*Extensive network.
Extensive service.*

Creating Customer value



Our success is attributed to our capability to render "Total Logistics" in the fully integrated logistics chain, through excellent coordination of respective teams and divisions within the Company. We deliver cargo anywhere, to provide a global network plus in-depth professional vertical e-integrated logistics services. We always see demand as diverse. We also understand that what we deliver is not simply a package, but services with sincerity.

Oriental Logistics Holdings Co., Ltd.

1-11, Ka Ting Road
Kwai Chung, N.T.
Hong Kong

Management Office:

Tel: (852) 2541 3337
Fax: (852) 2541 3439

Operations Office:

Tel: (852) 2541 3338
Fax: (852) 2541 3438

Guangzhou Branch

Room 712, Metro Plaza
183 Tian He Bei Road
Guangzhou
China
Tel: (86) 20-87550766
Fax: (86) 20-87550799

<http://www.orientallogistics.com>

**Oriental
Logistics**

東方物流